



IP Indoor High Speed Dome

CAM-6510

Ver. 090318

Quick Installation Guide



www.acti.com

1

Getting Started

1.1 PACKAGE CONTENTS

CAM-6510



Warranty Card



Software CD



Power & A/V Cable



LAN/WAN Cable



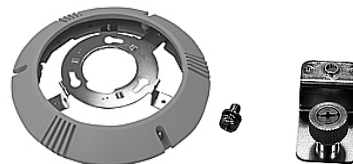
Power Adaptor



5.4" Transparent Cover

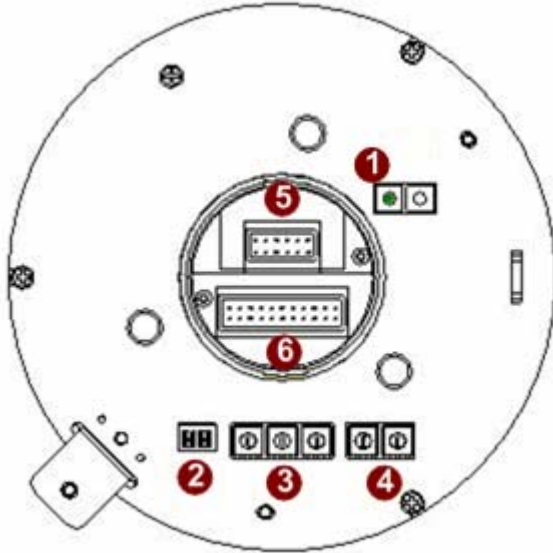


Decoration Ring / Fixing Plate



1.2 PHYSICAL DESCRIPTION

Indoor High Speed Dome Bottom



1. Reset Button

Step 1: Switch off IP device by disconnecting the power cable

Step 2: Press and continue to hold the Reset Button. Reconnect the power cable while continuing to hold the reset button.

Step 3: Keep holding the reset button depressed around 6 seconds, release the reset button. The unit will start up with factory default settings.

2. Communication Switch Setting

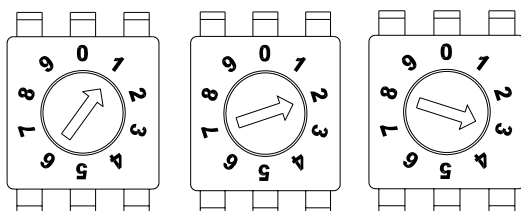
The table below shows the function of each pin within the Communication Switch.

Communication Switch	Pin 1	
	Pin 2	RS-232 Setting (Reserved)
	Pin 3	Termination
	Pin 4	Line Lock
	Pin 5	System Initialization (for upgrade)
	Pin 6	Reserved

RS-232 is reserved for internal use only; The Pin 3 and Pin 4, they are used for termination and Link Lock adjustment respectively. The Pin 5 is mainly used for return to factory default of camera setting.

3. Dome ID Setting

Use the switch to change your speed dome ID by turning the arrow to the desired number respectively. For instance, if the speed dome ID is 123, the ID switch should be set as below:



centesimal

decimal

single digit



NOTE: If controlling through an ACTi decoder via analog means such as a keyboard or DVR, no two speed domes should be given the same ID or communication conflict may occur. When controlled only through Ethernet and software (without the use of an ACTi hardware decoder), the dome ID setting may be neglected.



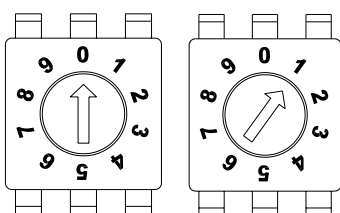
NOTE: The number “0” should locate upwards as shown in above diagram for correct switch definition.

4. Dome Control Protocol

Protocol is a specific set of rules, procedures used for data communications. Basing on the protocol of your management software that you are going to use. Use the switch to set your dome control protocol and the baud rate. Refer to table below and turn the arrow to choose a protocol for your speed dome.

Switch No.	Protocol	Baud Rate
01	Pelco D	2400
02	Pelco P	4800
07	DSCP	9600
11	Pelco D	4800
12	Pelco D	9600
13	Pelco P	2400
14	Pelco P	9600

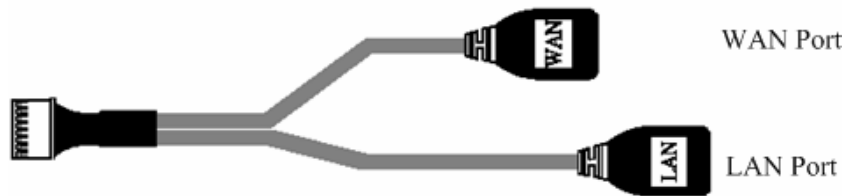
Select protocol: Pelco D, with switch no. 01 and baud rate 2400, for instance, the ID switch should be set as below:



decimal single digit

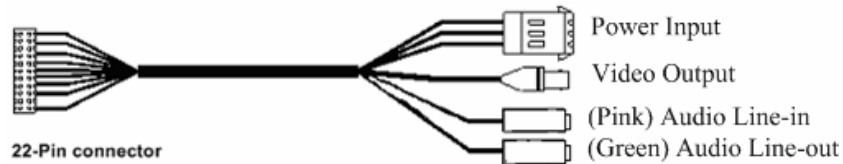
5. 16 Pin Connector for LAN/WAN

The LAN/WAN cable (shown as the figure below) is shipped with IP high speed dome. Please find it in the accessory bag.

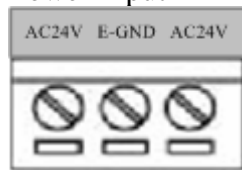


6. 22 Pin Connector

A 50cm data cable (shown as the figure below) is shipped with IP high speed dome. Please find it in the accessory bag.



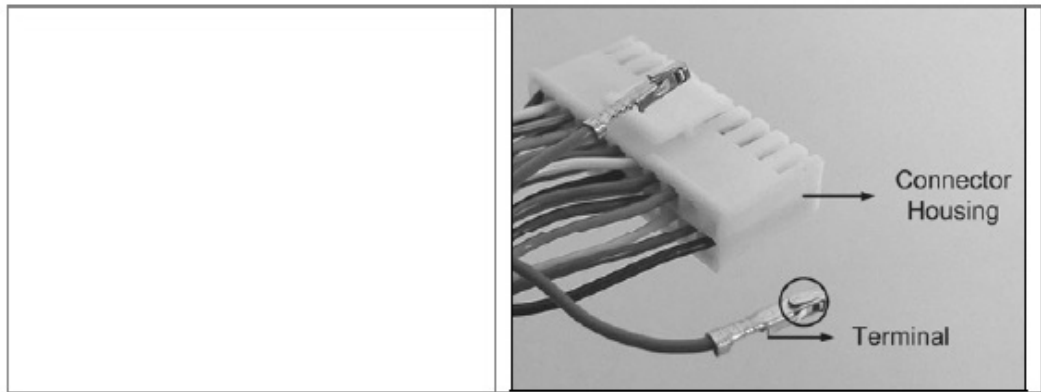
Power Input



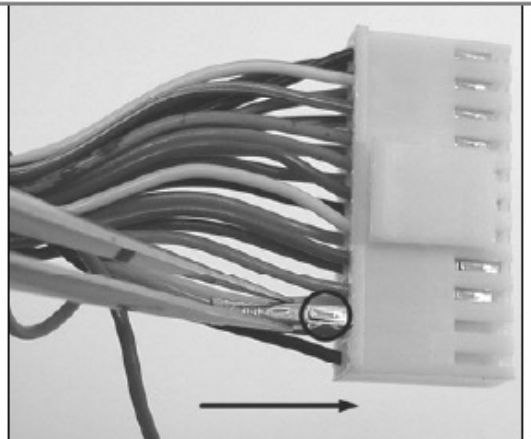
PIN	NAME	DESCRIPTION
1	AC24V	AC 24V of Power Input
2	E-GND	E-Ground Pin of Power Input
3	AC24V	AC 24V of Power Input

7. Cable Wiring

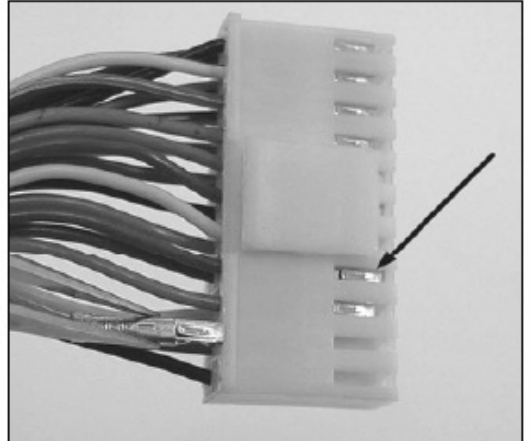
Users may need to do cable wiring when connecting alarm input and output devices. The table follows will illustrate the way to wire cords into the connector housing (shown in the figures below).



Insert the terminal into the pin holes on the connector housing, with the hook outward, as indicated in the figure.



To unlock the terminal, press the hook, as indicated in the figure, with a proper tool and pull it out gently.



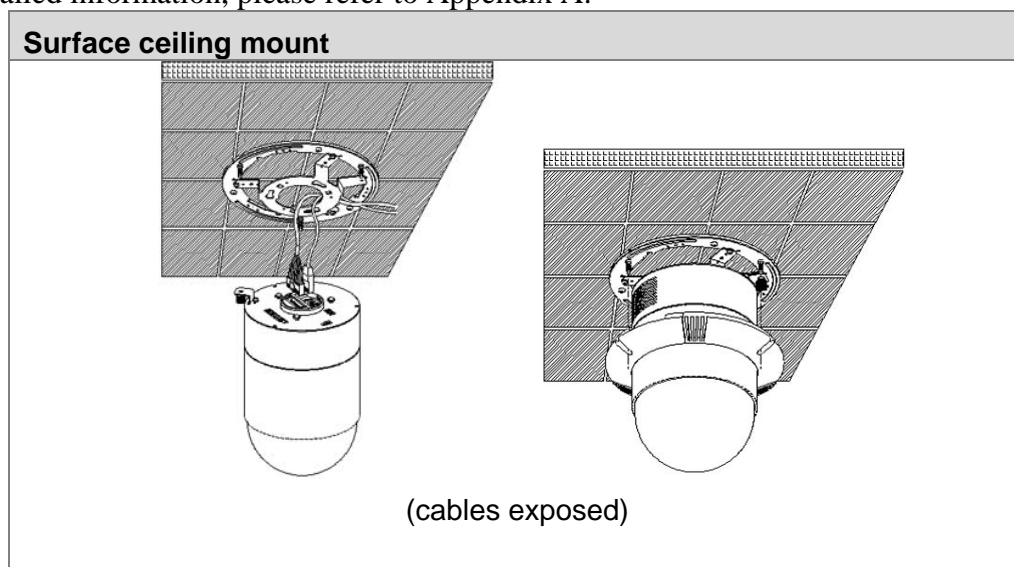
The alarm pins are serviceable for connecting alarm input and output devices, such as alarm sensors, sirens or flashing light with the surveillance system. The table shown as follows lists the definition of alarm pins on the 22-pin connector.



Pin	Definition
2	ALM NC
4	ALM NO
6	ALM COM
11	ISOG
12	ALM-1
13	ALM-3
14	ALM-2
15	ALM-4
16	ALM-5
17	ALM-6
18	ALM-7

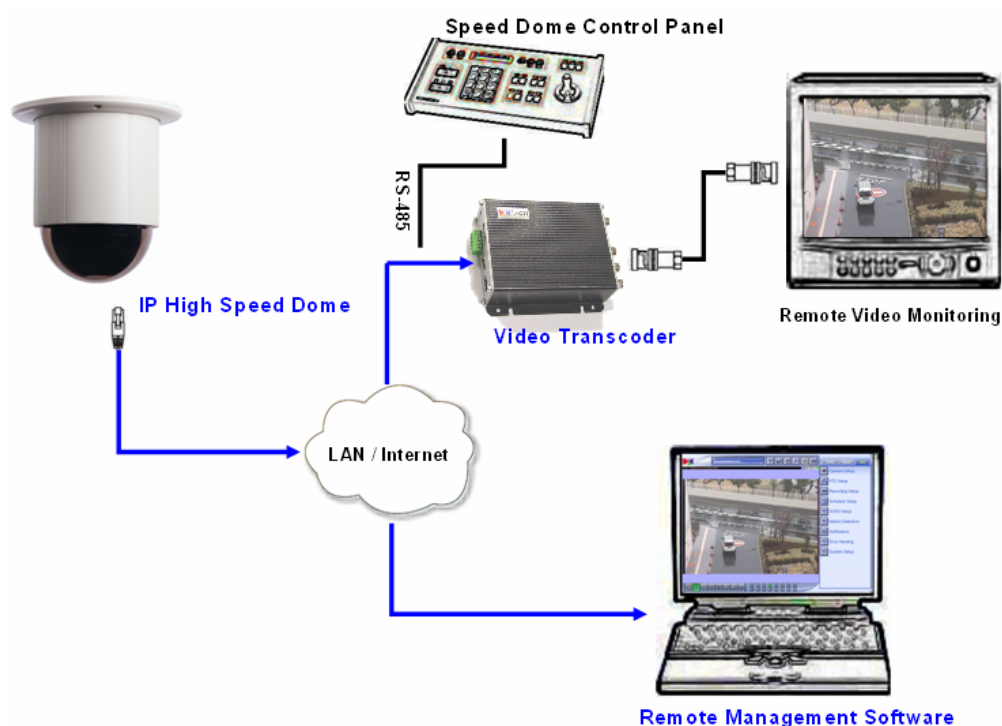
1.3 Mounting the IP High Speed Dome

Generally, there are three kinds of ceiling mounting methods: surface mount, in-ceiling mount, and mounting with straight tube. The surface mounting kit is shipped with IP high speed dome. For more detailed information, please refer to Appendix A.



1.4 Basic Connections

Follow the procedures below to connect the IP high speed dome to the respective apparatuses.



2

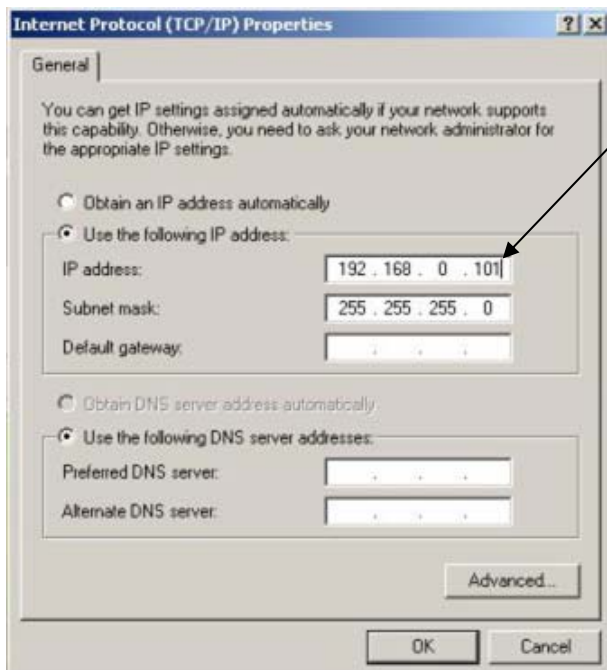
Quick Tour

This section guides you with a quick tour on IP high speed dome.

2.1 Configure the IP High Speed Dome

2.1.1 Make sure network environment

Default IP of IP high speed dome is 192.168.0.100. Please make sure IP high speed dome and your PC are on the same network segment before running the installation.

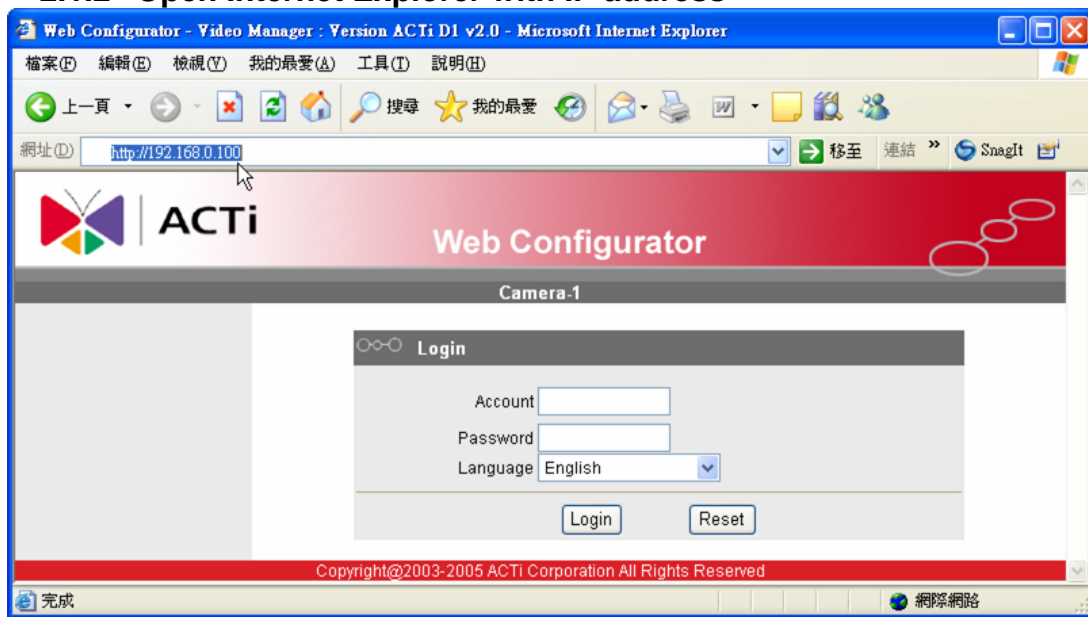


Please set the settings as below.

IP address: 192.168.0.xxx
Subnet mask: 255.255.255.0

(NOTE: xxx should be a number from 1 to 254, but 100 is excepted.)

2.1.2 Open Internet Explorer with IP address



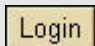
NOTE: If your web browser is earlier than IE6, then download IE6 is recommended.



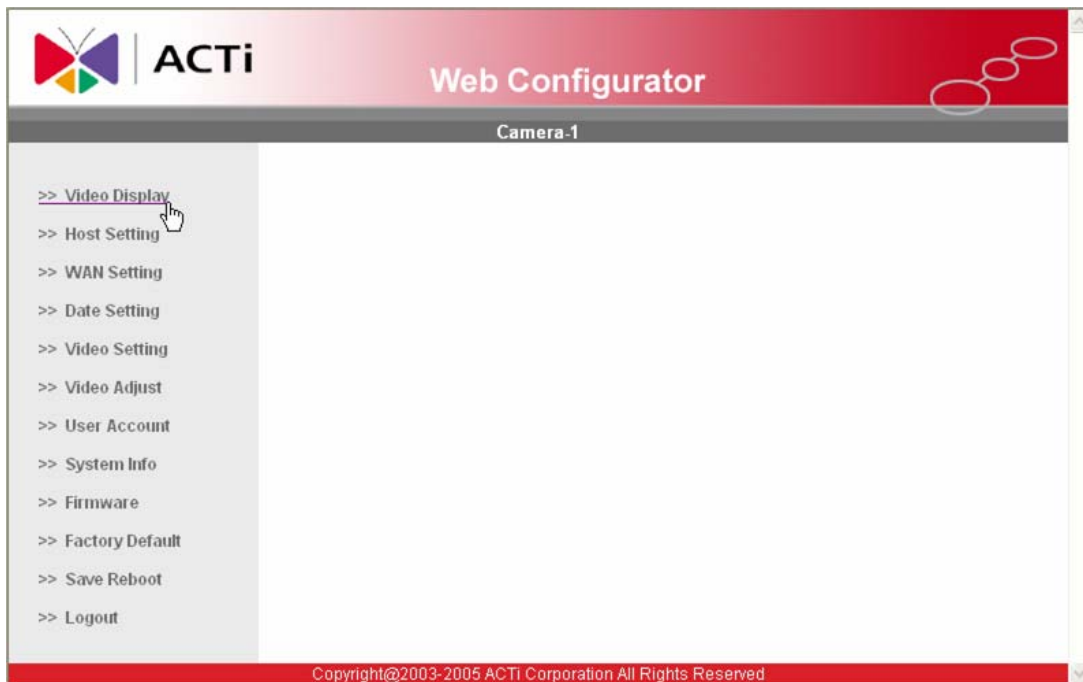
NOTE: The IP high speed dome default IP address is set to **192.168.0.100**

2.1.3 Login with default administrator's account & password

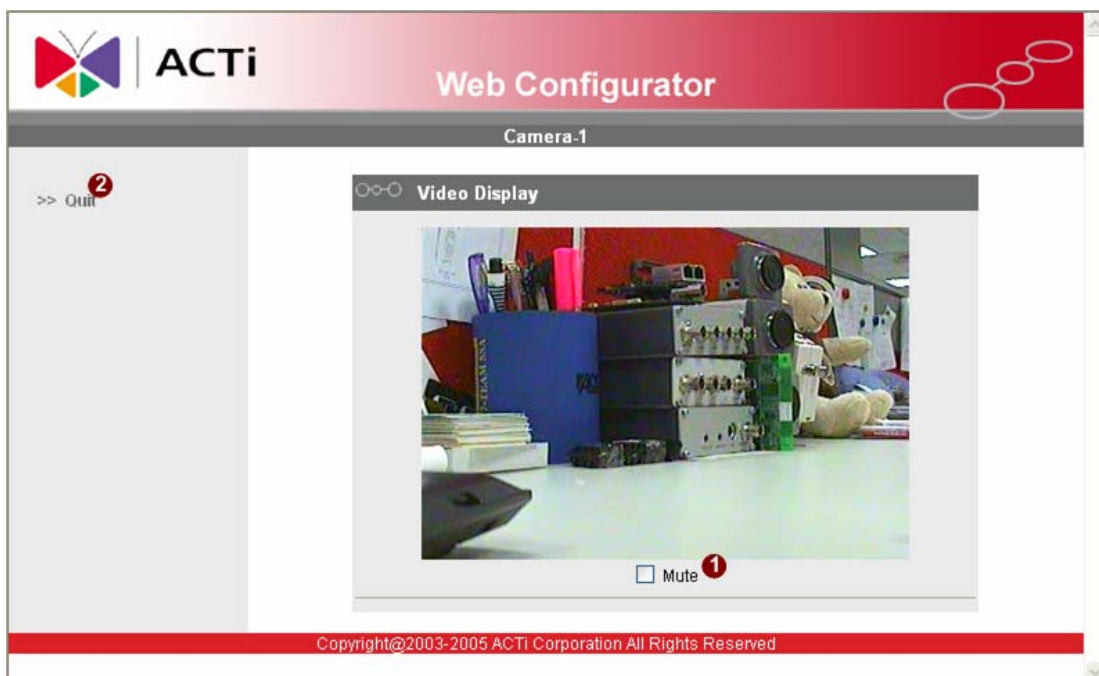


NOTE: Default administrator account is set to **Admin**, password is set to **123456**, and click  button.

2.1.4 Preview the video



NOTE: In your Client PC, please make sure the setting of Network Connections Type is set to Auto Negotiation, since IP high speed dome follows MII standard. Otherwise, you might not see the live image.



2.15 Set the new IP address

The screenshot shows the ACTi Web Configurator interface for Camera 1. The interface is divided into three main sections: Host Setting, LAN Setting, and Network Link Speed & Duplex. Red numbered callouts (1-8) highlight specific fields and buttons:

- 1: Host Name field (ACTi)
- 2: Language dropdown menu (English)
- 3: Apply buttons for Host Setting, LAN Setting, and Network Link Speed & Duplex
- 4: Reset buttons for Host Setting, LAN Setting, and Network Link Speed & Duplex
- 5: IP Address field (192.168.0.100)
- 6: Subnet Mask field (255.255.255.0)
- 7: LAN Port dropdown menu (Auto Detect)
- 8: WAN Port dropdown menu (Auto Detect)

***Host Name** : Enter in the domain name, Default Host Name is ACTi.

***Language** : Language setting for Web Configurator after Save Reboot. Default setting is English.

***IP Address** : The IP address of the LAN interface. The default IP address is 192.168.0.100.

***Subnet Mask** : The subnet mask of the LAN interface. The default subnet mask is 255.255.255.0

***Click**  button



NOTE: Check with your MIS department, if Client PC and IP high speed dome are setting in different VLANs, please connect to WAN port.



NOTE: In your Client PC, please make sure the setting of Network Connections Type is set to Auto Negotiation, since IP high speed dome follows MII standard. Otherwise, you might not see the live image.



IMPORTANT: After the IP address is changed, please record this IP address. There is no way to connect to the IP high speed dome if user forgets the new IP address.

2.1.6 Check Default Video Setting



The streaming type [Version 1.0] – without audio function

The streaming type [Version 2.0] – with audio function



NOTE: Please make sure the TV Input (NTSC / PAL) is meet your requirement, and click [Apply](#) button.

2.1.7 Click **Save Reboot** to restore all settings and please wait about 30 seconds for system reboot.